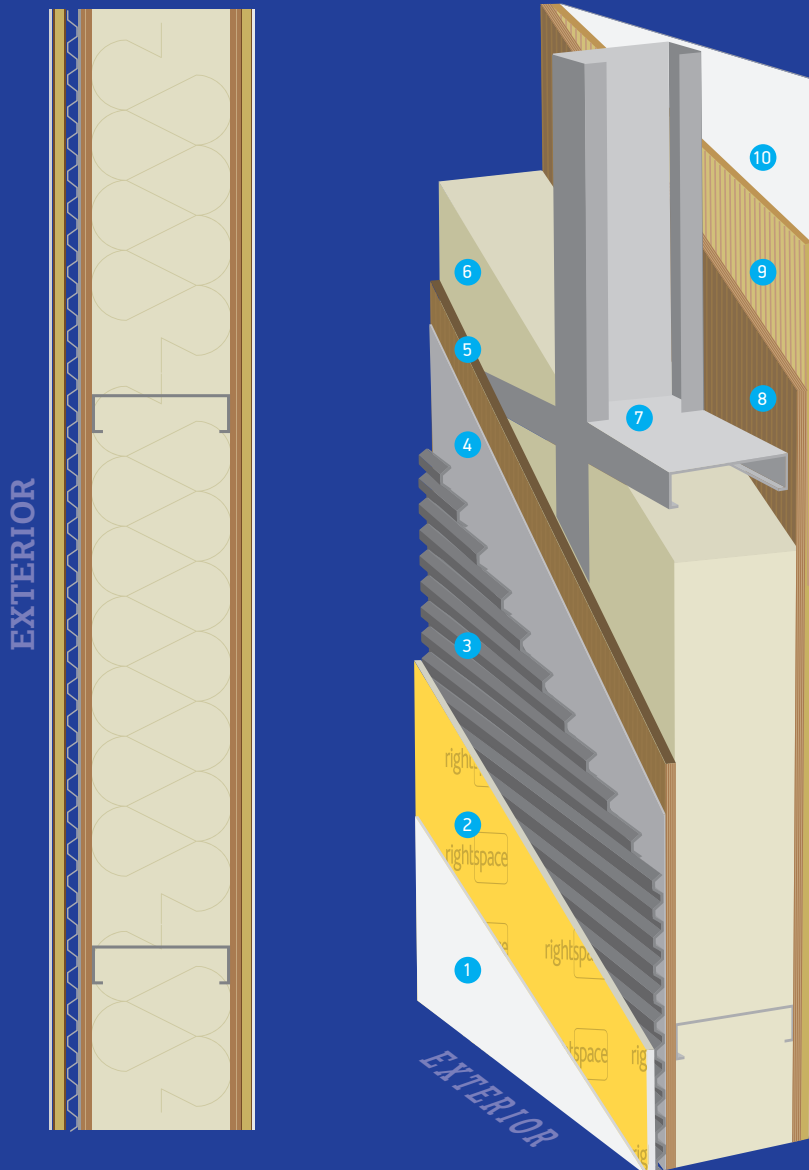


Keep-It Dry Wall™

External Wall Details

CREATING THE
RIGHT SPACE
FOR YOU



Keep-It Dry Wall™

This is the ultimate solution in external wall construction for hot humid climates. The patented Keep-It Dry Wall™ membrane helps regulating the humidity levels indoors so as this to be always at optimum levels.

Wall Details

- 1 Render (3 layers), & glass fibermesh & Paint (3 layers)
- 2 12mm Dense Glass Yellow External Gyp. Board or MgO Board
- 3 Keep-It Dry Membrane - Water Barrier
- 4 Moisture Barrier
- 5 11mm Plywood, or OSB - Grade 4 or Cement Board 12mm
- 6 2 Layers Rockwol Insulation, each 50mm - 50kg/m²
- 7 150/89mm Marine Grade, Galvanised Light Gauge Steel Frame, G550 Z275
- 8 11mm Plywood, or OSB - Grade 2 or Cement Board 12mm
- 9 12mm Gyp. Board or MgO Board
- 10 Render (2 layers) & Paint (3 layers)

rightspace

SPACIAL VERSATILITY

Rightspace Construction Ltd.

T +357 25 86 50 90
F +357 25 86 50 80
M +357 99 60 41 11
E info@rightspace.net

www.rightspace.net

Member of Phil. Andreou Group

Professional Memberships:



Steel Framing Alliance
Steel. The Better Builder



THE EUROPEAN LIGHT STEEL
CONSTRUCTION ASSOCIATION