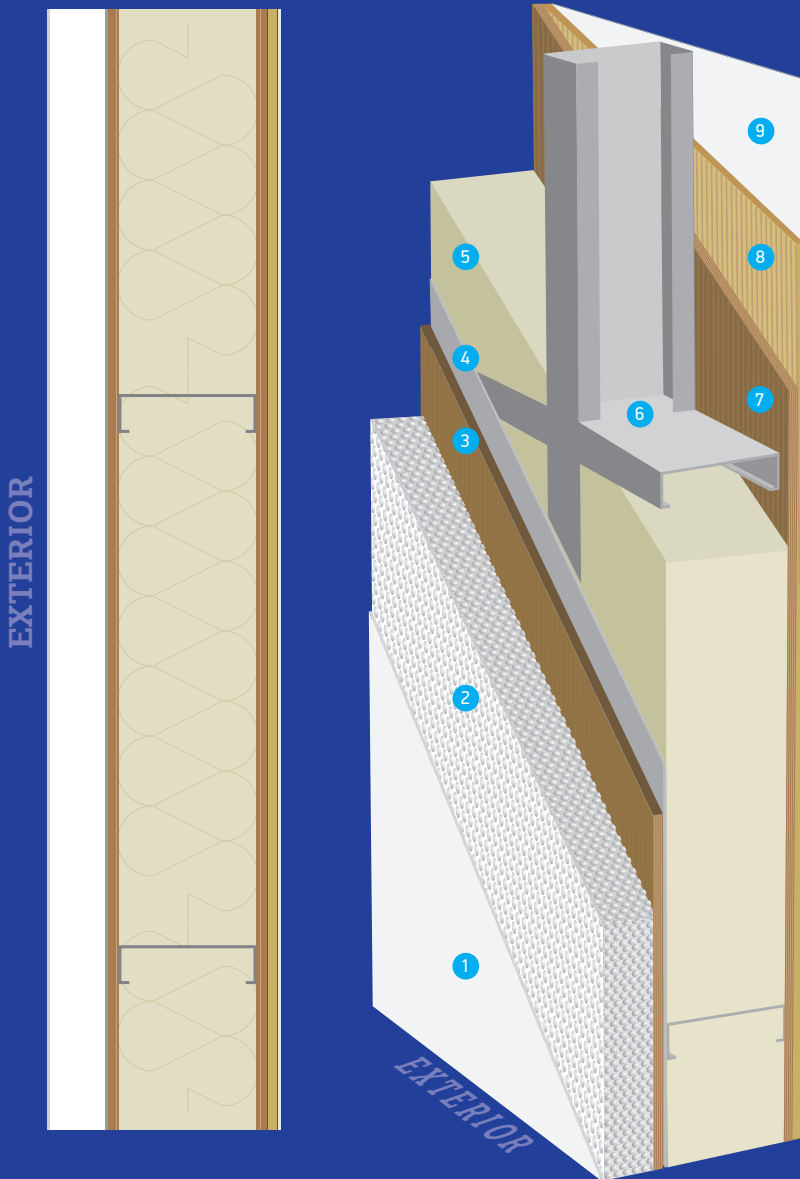


Insul-Air Wall™

Exterior Wall Details

CREATING THE
RIGHT SPACE
FOR YOU



Insul-Air Wall™

A superior Home asks for superior materials. Insul-Air Wall™ Wall construction offers a perfectly modern façade providing superior acoustic and thermal capabilities. The permeable external base plaster consisting of a filler and fiber glass mesh, in addition with a vapour permeable, weather-resistant top plaster made from a skim based on artificial resin creates a wall like no other. Able to withstand the hottest and coldest climates providing minimal temperature changes to the interior.

Wall Details

- 1 Render (3 layers), & glass fibermesh & Paint (3 layers)
- 2 Insul-Air Wall™ 60-100mm EPS Heat Insulating Composite System
- 3 11mm Plywood, or OSB - Grade 4 or Cement Board 12mm
- 4 Moisture Barrier
- 5 2 Layers Rockwool Insulation, each 50mm / 50kg/m²
- 6 150/89mm Marine Grade, Galvanised Light Gauge Steel Frame, G550 Z275
- 7 11mm Plywood, or OSB - Grade 2 or Cement Board 12mm
- 8 12mm Gyp. Board or MgO Board
- 9 Render (2 layers) & Paint (3 layers)

rightspace
SPACIAL VERSATILITY

Rightspace Construction Ltd.

T +357 25 86 50 90
F +357 25 86 50 80
M +357 99 60 41 11
E info@rightspace.net

www.rightspace.net

Member of Phil. Andreou Group

Professional Memberships:



Steel Framing Alliance
Steel. The Better Builder

lsk



THE EUROPEAN LIGHT STEEL
CONSTRUCTION ASSOCIATION